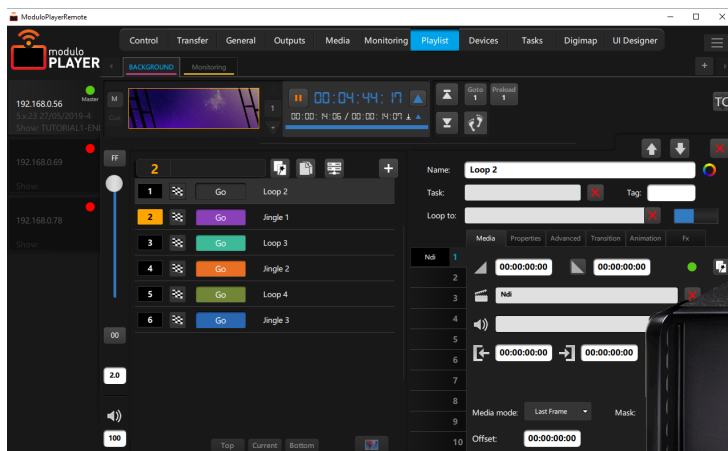


Modulo Player Ultra

REF: MP-UX-1, MP-UX-2, MP-UX-4, MP-UX-2x4K, MP-UX-3x4K



The versatile media server solution for advanced features

When user-friendliness meets unrivaled quality. Modulo Player Ultra is designed for the most specific needs and offers still uncompressed TGA/DPX images sequences reading, active 3D stereo display, and more.

Hardware specifications

Operating System: Windows 10 LTSB x64

RAM: 4 x 4GB DDR4

Storage: 1 x SSD 120GB OS / DATA: depending on version

Processor: Intel® Core™ i9

LAN: 2 x RJ45 10GbE

Audio: 8 channels (mini jack 3.5mm asymmetrical)

USB: 2 x USB 3.1 (Gen 2) + 4 x USB 3.0

Graphics Card: AMD Radeon Pro

Power Supply: 100-240 VAC / 50-60Hz / 850W

Average power consumption (high load): 450W

Versions

Reference

MP-UX-1
MP-UX-2
MP-UX-4
MP-UX-2x4K
MP-UX-3x4K

Physical outputs

4 x DP 1.4
4 x DP 1.4
4 x DP 1.4
4 x DP 1.4
6 x mini DP 1.4

Outputs

1 output up to WQXGA⁽¹⁾
2 outputs up to WQXGA⁽¹⁾
4 outputs up to WQXGA⁽¹⁾ or 1 output up to 4K⁽²⁾
4 outputs up to WQXGA⁽¹⁾ or 2 outputs up to 4K⁽²⁾
6 outputs up to WQXGA⁽¹⁾ or 3 outputs up to 4K⁽²⁾

Storage Data

1 TB PCIE NVME SSD
2 TB PCIE NVME SSD
4 TB PCIE NVME SSD
8 TB PCIE NVME SSD
8 TB PCIE NVME SSD

⁽¹⁾ 2560 x 1600

⁽²⁾ 4096 x 2160

Options

Reference

DELTA-3G-2 Live Capture 2 x 3G SDI 3G
DELTA-412G Live Capture 1 x 12G SDI or 4 x 3G SDI
DELTA-812G Live Capture 2 x 12G SDI or 8 x 3G SDI
DELTA-HDMI2 Live Capture 2 x HDMI 2.0

Reference

AD-GEN Genlock card
TC-USB-R Time code reader card - Pcie
TC-PCIE-RW Time code reader generator card - Pcie
TC-USB-R Time code reader card - USB

Software specifications

Remote control Software

Free remote application (Mac/PC) to control any number of networked Modulo Player

Playlist

Unlimited number of playlists and cues
Cues can be triggered manually or automatically
10 layers per cue
High flexibility allowing last-minute changes

Settings per layer

Position, scale, rotation, opacity, color, fade in/out
Advanced colorimetry, crop, progressive mask, clip, keyframed animation
Database of 2D GPU effects
Support for interactive shader format
Movie: In/out time, loop mode, speed change with frame blending

Synchronization

Synchronize any number of networked Modulo Player with an easy master/slave set-up
Synchronization with MTC or LTC timecode (optional)
Genlock/Framelock (optional)

Outputs tools

Warping grid (keystone or curve), advanced soft edge, mask, test patterns generator, advanced color adjustment
Exclusive X-Map function for complex video mapping
LED Pixel mapper (Art-Net)

Low-latency live mixer

Dedicated multi-user remote application (Mac/PC)
Live Preview/Program/Confidence screens
Unlimited number of destination and mix engines
Preset & Quickset
Mask & Keying
Transition effects: cut, fade, flying,...
Cut & Take buttons
Sources: Workspace, HDMI 2.0, low-latency SDI 3G/12G, NDI

Environmental specifications

Max altitude: 2 700 m
Operation temperature: 10°C ~ 35°C
Non operation temperature: -40°C ~ 70°C
Non operation humidity: 20% ~ 90% (Non condensing)

Complimentary

EU power cord
1 x active adaptor (mini) DP->DVI single link per output
Modulo Player Remote: PC/Mac remote control software
Modulo Wing: PC/Mac application to see your playlists and launch tasks. Also available on iOS and Android
Modulo Panel: PC/Mac application to host your custom user panels

Warranty

2-year return-to-base

Medias

MPEG-2 (4:2:2), H264 (4:2:0) with multiplexed audio embedded
HAP, HAP Alpha, HAP Q support
Apple ProRes with 10 bits support
Uncompressed still sequence TGA, or 10 bits DPX
QuickTime uncompressed RGB, YUV8 or YUV10bits
Multichannel audio file (wav,aiff)
Still images: png, jpg, tiff
Other media: Text, scrolling text, counter/countdown/clock, web page

Interactivity

Easily control the parameters of your media - including position, rotation, opacity, color,... - using external devices (OSC, Art-Net, MIDI, TCP/IP Rotary encoder)

Show Control

Create, control, and play automated tasks for a wide number of preloaded external devices including video-projectors, matrix switchers, video processors.
The device main parameters are available in our extensive library to ensure fast and easy control through Modulo Player
Trigger tasks from specific devices such as Calendar, MIDI, OSC, GPIO, Art-Net and DMX
Possibility to control Modulo Player with ASCII TCP/IP command with an extensive protocol

User Panel

Easily create different user panels: Drag & drop tasks, add buttons, texts, images, web pages, etc.
User panels are compatible with PC, Mac, iOS, and Android devices

Physical specifications

Frame	19-inch rack 4U		
Product	W	H	D
Dimensions without handles	427 mm 16,81"	176,80 mm 6,96"	480 mm 18,90"
Dimensions with handles	485 mm 19,10"	176,80 mm 6,96"	530 mm 20,87"
Weight	~ 20 kg	~ 44 lbs	
Shipping	W	H	D
Dimensions	545 mm 21,46"	285 mm 11,22"	665 mm 26,18"
Weight	~ 24 kg	~ 53 lbs	